

TUTORIAL

Lulu skirt

Free pattern



Smospotten & Snoesjes

General info

'Lulu' a new and free pattern that I would like to share with you. A Lulu is a romantic, girly and playful skirt with 'wings'. You can choose between a mini or midi skirt and a small or wide ruffle. Lulu is a pattern from **size 92 to size 152**.

Tested and approved by all these lovely people: Sharona, Ellen, Marieke, Tine, Helena, Justine, Nancy, Kirsten, Wendy, Linda, Suzan, Hanne en Hannelie.

Copyright Smospotten & Snoesjes, all rights reserved.

If you want to use the pattern for **commercial purpose** (selling, workshop, ...) you can contact me for a license: neeltjedewaele@gmail.com

Don't forget to share your creations on social media
#luluskirt #lulurok #smospottenensnoesjes


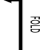



The pattern

The pattern is available as an A0 - or A4 - file.
You can find the overview of the size range on the pattern as well as the test square of 3cm by 3cm.

Set your printer to printer settings:
Print at **100%, Actual size** or **No scaling**.

Overview of the **symbols** that are used on the pattern.

		
Cut	Fold	Grainline

Size chart

With this pattern you have to measure your child's waist.
Measurements are in **centimeters**. Choose the size by the measurements in the chart:

Maat	92	98	104	110	116	122	128	134	140	146	152
TO	47	48	50	51	52	54	55	57	58	60	62

Make sure you also measure the length of your child. Is the waist size 57cm and length 140cm? Then you can make size 134 with length 140.

Fabric & supplies required

Recommended fabric:

I recommend working with thin fabrics. These can be both stretch and non-stretch fabrics such as: cotton, tricot, double gauze, linen, ...

For a fabric width of 150cm you will need:

MINI

92	98	104	110	116	122	128	134	140	146	152
50 cm	55 cm	60 cm	70 cm	75 cm	80 cm	85 cm	90 cm	95 cm	100 cm	100 cm

MIDI

92	98	104	110	116	122	128	134	140	146	152
70 cm	75 cm	80 cm	90 cm	95 cm	100 cm	105 cm	110 cm	115 cm	120 cm	120 cm

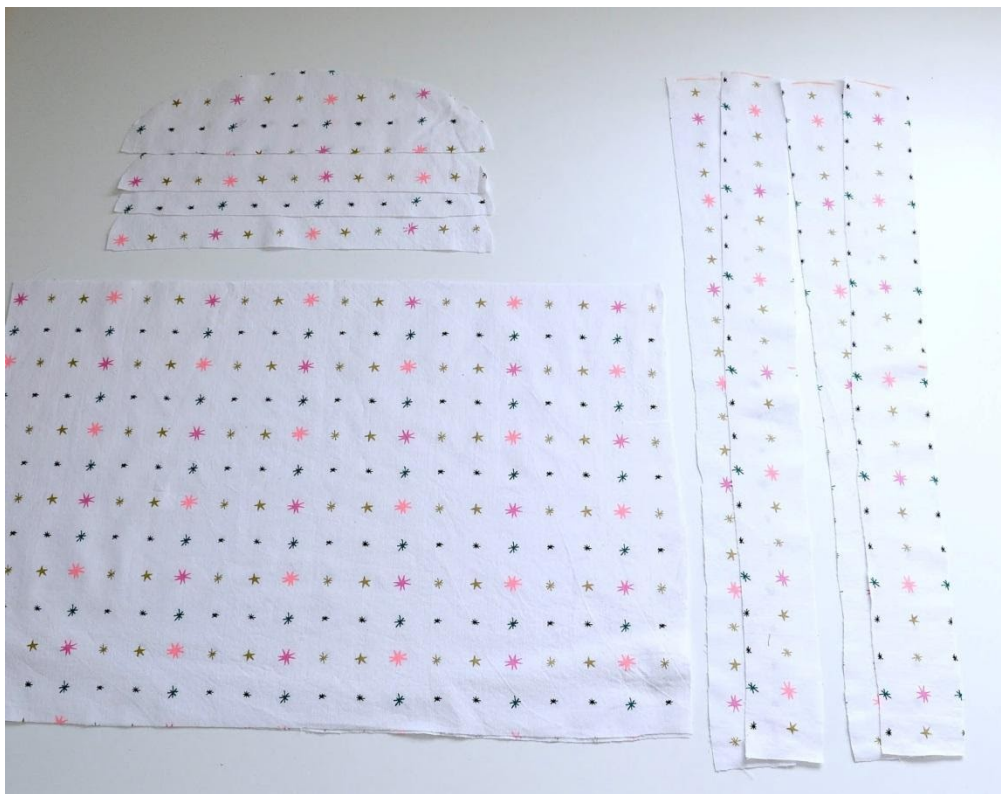
Other supplies:

- matching thread
- elastic 2.5cm
- safety pin

Tutorial

This pattern is drawn without seam allowance.
Add 1cm seam allowance everywhere. , 5cm seam allowance on the top of the skirt en 3cm seam allowance on the bottom of the skirt.

STEP 1: Cut the pattern pieces and copy the markings onto the fabric.



STEP 2: Serge or zigzag the top of the skirt pieces.



STEP 3: Place the skirt pieces right sides together and sew + serge the side seams.



STEP 4: Pleat the top of the skirt 4cm inwards and pin 3cm from the top.



STEP 5: Sew 3cm from the top. **Mind!** Leave a hole to put the elastic through.



STEP 6: Measure the elastic around your child's waist and put it through the tunnel of the skirt.



STEP 7: Sew the ends of the elastic together.



STEP 8: Now stitch the hole of the tunnel also at 3cm from the top.



STEP 9: Hem the bottom of the skirt 2 times 1.5 cm. Pin and sew.



STEP 10: Place the right sides of the wings together. Pin and stitch the curved side.



STEP 11: Turn the wings right sides out. Topstitch the curved seams.



STEP 12: Stitch a gathering thread on the bottom of the wings. Wrinkle the wings to the desired size.



STEP 13: Place the center of the wing on the mark of 1 of the ribbons. Pin and stitch as close to the edge as possible.





STEP 14: Now place the other ribbon right side on the ribbon with wing. Make sure that you fold the wing inwards so that it is not in between when you stitch the sides. Stitch 3 sides of the ribbon: the 2 long sides and 1 short side (not the one you need to attach to the front of the skirt!)



STEP 15: First, cut the corners of the ribbon diagonally. Thin out the seam allowance where necessary. Then turn the ribbon inside out, iron and topstitch the seams of the ribbon. Repeat for the other ribbon.





STEP 16: Measure the top of the skirt and mark the center with a pin.



STEP 17: Depending on the size, you indicate with 2 more pins where the ribbons should be.

Size 98-104: at 4cm from the center.

Size 110 -116: at 4.25cm from the center.

Size 122-128: at 4.5cm from the center.

Size 134 -140: at 4.75cm from the center.

Size 146 -152: at 5cm from the center.



STEP 18: Serge or zigzag the bottom of the ribbons before attaching them.



STEP 19: Now attach the ribbons. Match the center of the ribbons with the pins. Place the ribbons at the remaining seam allowance on the inside of the skirt. Stitch it in that place as.



STEP 20: The skirt is almost ready. Only sew the ribbons at the back and finish it up with buttons. (You can see press studs in the photo below, but I wouldn't recommend this. It's best to sew a regular button onto the ribbons)



STEP 21: To prevent the ribbons from falling off the shoulders, you can make a small stitch where the ribbons cross. Do they still fall off while playing? Then you can use a safety pin on the inside of the t-shirt at the shoulders.



YOUR LULU SKIRT IS READY!



Thanks for using this pattern!
I am very curious about your creations.
xxx Neeltje